



PRODUCT SPECIFICATION SHEET

WOODEN DOOR SASH MORTICE LOCK 85mm x 50mm TMPZ 4044

Description

The Teruei Euro Mortice Lock is designed for European lock cylinders, often used in residential, commercial buildings, hotels and school doors. Its pairs with various handles, escutcheons, cylinders and access systems, offering flexibility and high performance. This makes Teruei mortice lock a popular choice for international projects.

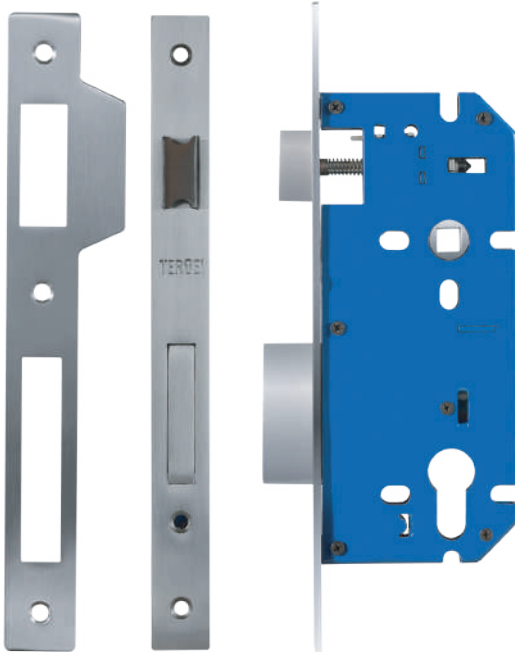
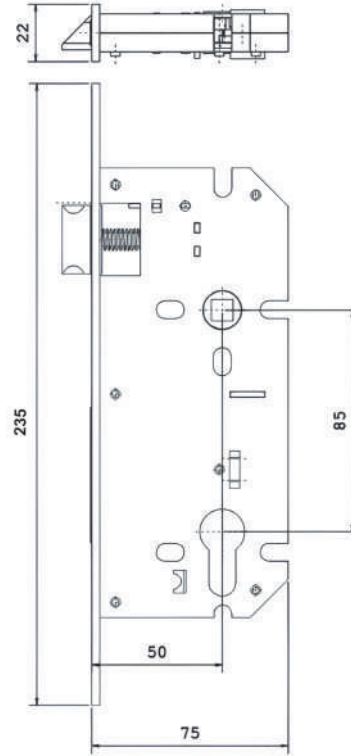


Product Specification	
Backset available	75mm
Square Profile Forend	22mm
Forend Material	SS 304
Right/Left	YES
Dead bolt	Double throw
Latch Bolt	Anti-rattle strike
Color	Satin Nickel
Life Cycle	200,000
Body	Premium Zinc
Make	Made in India

Standards




Suitable



Basic Lockcase	
Forend Width	22mm
Forend Height	235mm
Forend Thickness	2.7mm
Case Height	165mm
Case Width	85mm
Case Thickness	15mm

Strike Plate	
Strike Plate Width	24 (exc. Lip)
Strike Plate Height	180mm
Strike Plate Thickness	2mm
Strike Plate Lip Height	235mm

Code	Description	Finish	Additional Details
TMPZ 4044	85mm x 50mm Mortise Lock	Satin Nickel	Approx weight: 560 grm
 teruei.com	For more information, please contact: Product Specialist:		Channel Partner: